



MORECAMBE



FLOTATION ENERGY

Morecambe Offshore Windfarm: Generation Assets Environmental Statement

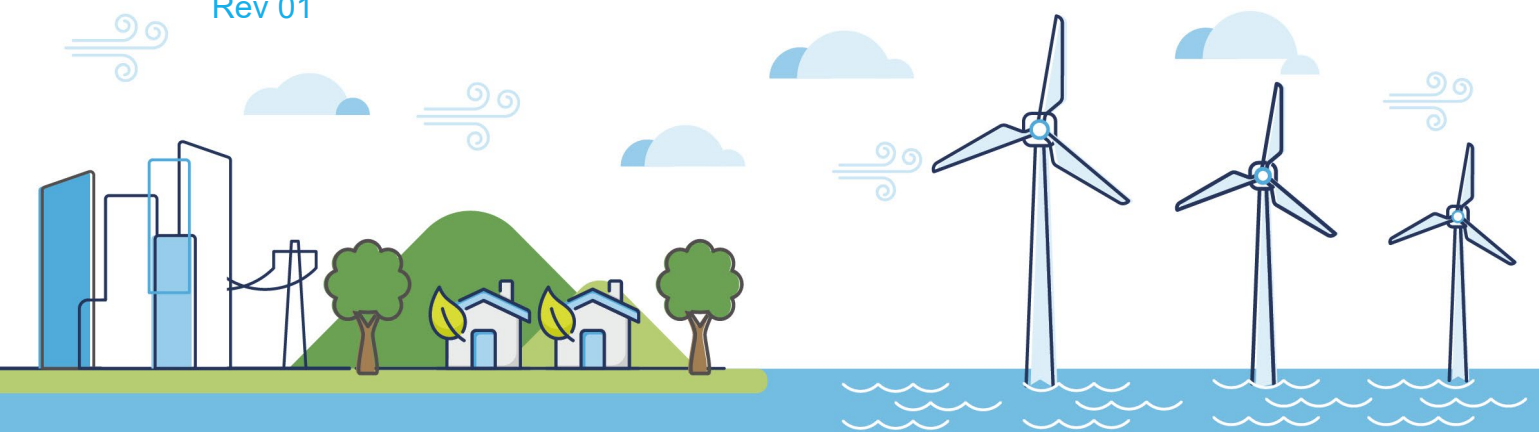
Volume 5

Chapter 18 SLVIA Figures (Part 17 of 34)

PINS Document Reference: 5.3.18.17

APFP Regulation: 5(2)(a)

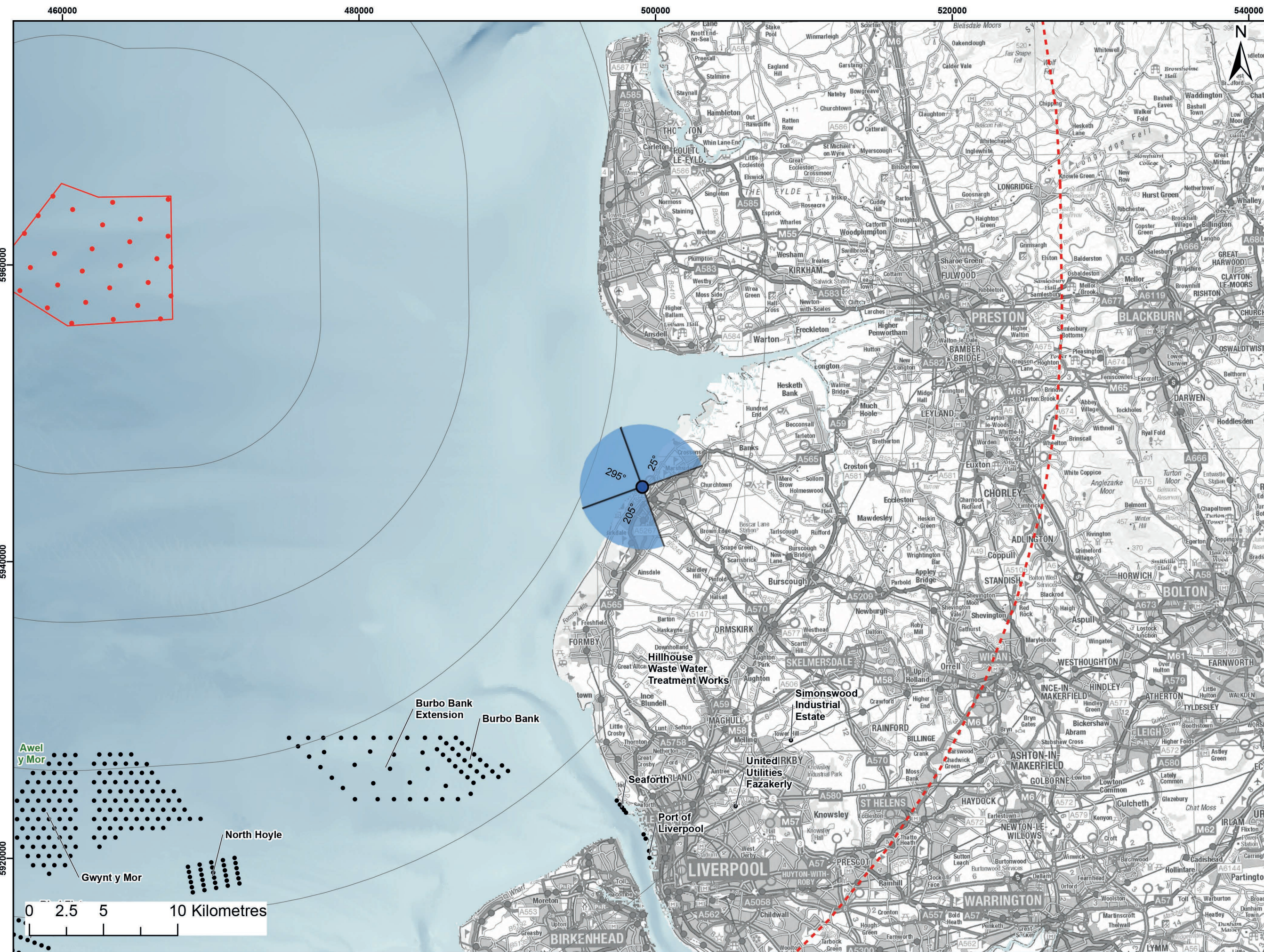
Rev 01



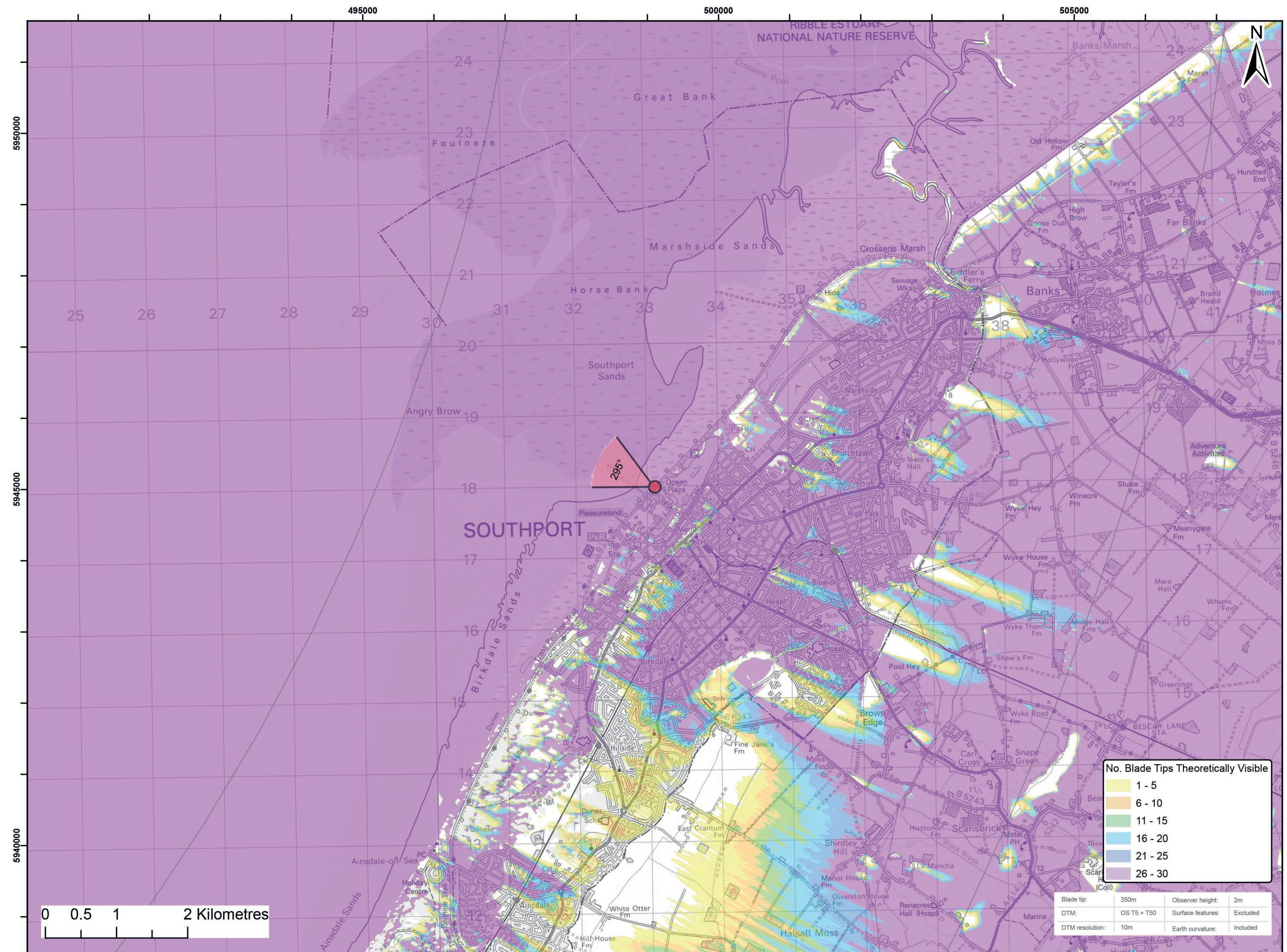
Document History

Doc No	MOR001-FLO-CON-ENV-FIG-1180	Rev	01
Alt Doc No	PC1165-RHD-ES-XX-DG-Z-0018		
Document Status	Approved for Use	Doc Date	May 2024
PINS Doc Ref	5.3.18.17	APFP Ref	5(2)(a)

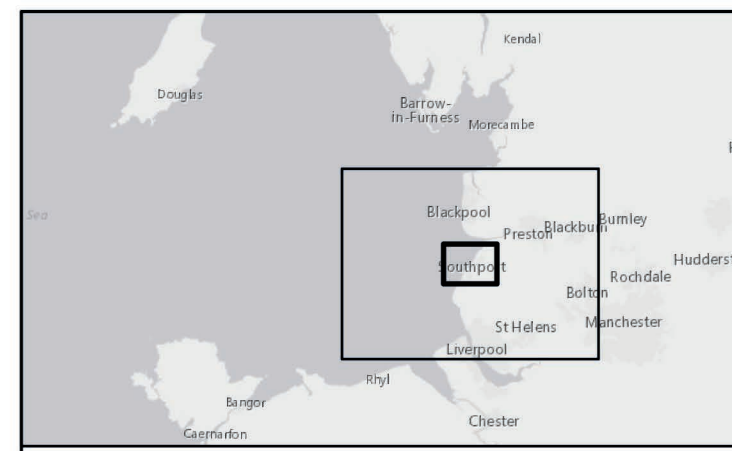
Rev	Date	Doc Status	Originator	Reviewer	Approver	Modifications
01	May 2024	Approved for Use	Royal HaskoningDHV	Morecambe Offshore Windfarm Ltd	Morecambe Offshore Windfarm Ltd	n/a



Viewpoint Location Plan Baseline Panorama (90 Degree View)
Scale: 1:200,000



Viewpoint Location Plan (53.5 Degree View)
Scale: 1:50,000



Legend:

- Morecambe Offshore Wind Farm Locations (30 x BT 310m(HAT))
- 90 Degree Field of View
- 53.5 Degree Field of View
- 10km Radii
- 60km Study Area
- Morecambe Offshore Windfarm Site

Cumulative Wind Farms Status

- Operational
- Under Construction
- Consented
- Application
- Scoping
- Pre-Application

© Crown copyright and database rights (2023) Ordnance Survey 0100031673.

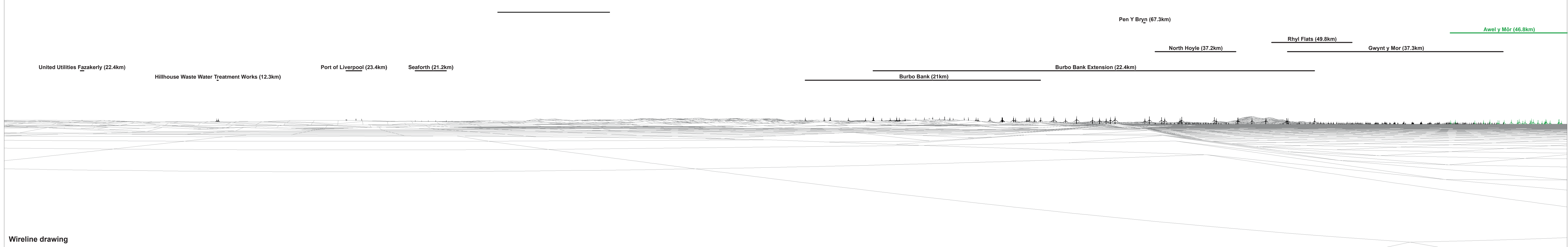
Report:
Morecambe Offshore Windfarm: Generation Assets Environmental Statement

Title:
Viewpoint 11: Southport Pier

Figure: 18.34a	Drawing No: 211609				
Revision: P02	Date: 25/09/2023	Drawn: RA	Checked: SM	Size: A3	Scale: 1:50,000

Co-ordinate system: WGS 1984 UTM Zone 30N





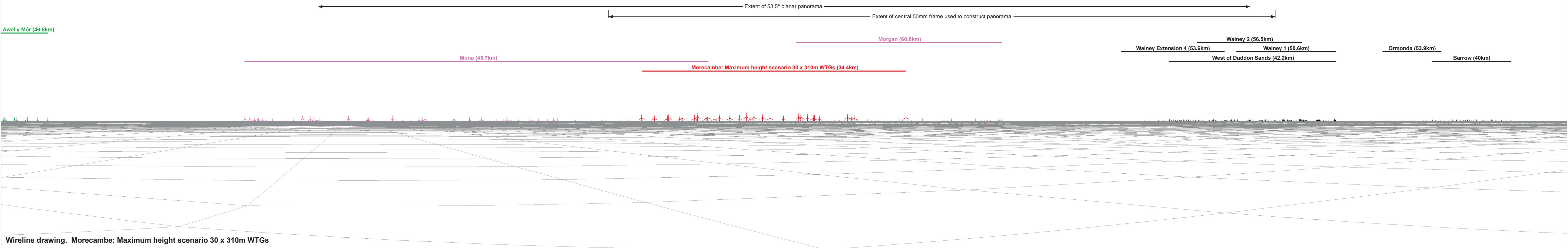
OS reference:	333109 E 417985 N	Horizontal field of view:	90° (cylindrical projection)	Camera:	Canon EOS 6D
Eye level:	8.24 m AOD	Principal distance:	522 mm	Lens:	EF50mm f/1.4 USM
Direction of view:	205°			Camera height:	1.5 m AGL
Nearest turbine:	34.385 km			Date and time:	20/04/2022, 11:42

Figure: 18:34b
Viewpoint 11: Southport Pier



Baseline photograph

This image provides landscape and visual context only



OS reference:	333109 E 417985 N	Horizontal field of view:	90° (cylindrical projection)	Camera:	Canon EOS 6D
Eye level:	8.24 m AOD	Principal distance:	522 mm	Lens:	EF50mm f/1.4 USM
Direction of view:	295°			Camera height:	1.5 m AGL
Nearest turbine:	34.385 km			Date and time:	20/04/2022, 11:42

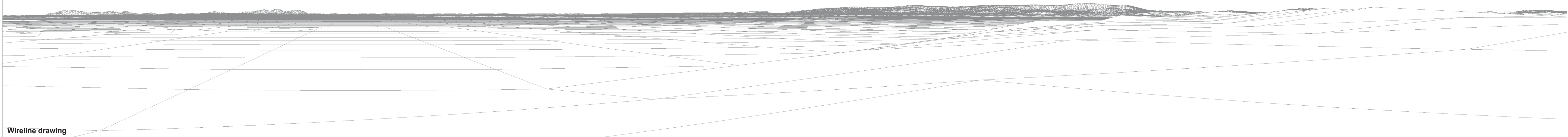
Figure: 18:34c
Viewpoint 11: Southport Pier



Baseline photograph

This image provides landscape and visual context only

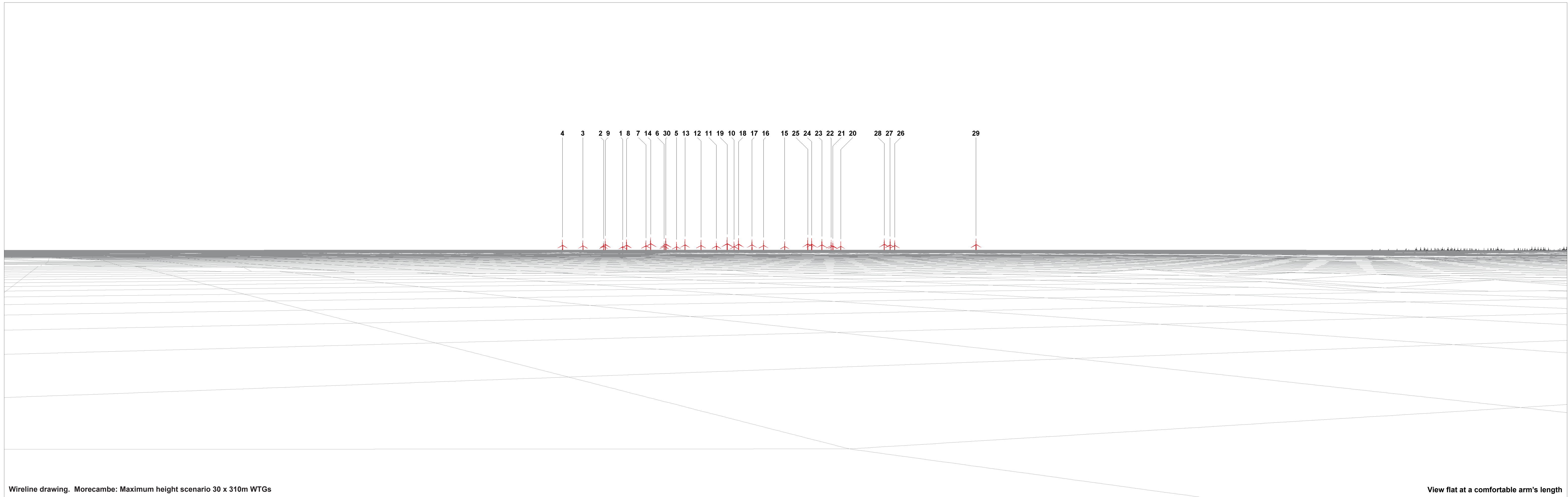
Kirkby Moor (65.7km)



Wireline drawing

OS reference:	333109 E 417985 N	Horizontal field of view:	90° (cylindrical projection)	Camera:	Canon EOS 6D
Eye level:	8.24 m AOD	Principal distance	522 mm	Lens:	EF50mm f/1.4 USM
Direction of view:	25°			Camera height:	1.5 m AGL
Nearest turbine:	34.385 km			Date and time:	20/04/2022, 11:42

Figure: 18:34d
Viewpoint 11: Southport Pier



Wireline drawing. Morecambe: Maximum height scenario 30 x 310m WTGs

View flat at a comfortable arm's length

OS reference:	333109 E 417985 N	Horizontal field of view:	53.5° (planar projection)	Camera:	Canon EOS 6D
Eye level:	8.24 m AOD	Principal distance:	812.5 mm	Lens:	EF50mm f/1.4 USM
Direction of view:	295°	Paper size:	841 x 297 mm (half A1)	Camera height:	1.5 m AGL
Nearest turbine:	34.385 km	Correct printed image size:	820 x 260 mm	Date and time:	20/04/2022, 11:42

Figure: 18:34e
Viewpoint 11: Southport Pier



Baseline Photograph (offshore operational turbines have been rendered in this view)

View flat at a comfortable arm's length

OS reference:	333109 E 417985 N	Horizontal field of view:	53.5° (planar projection)	Camera:	Canon EOS 6D
Eye level:	8.24 m AOD	Principal distance	812.5 mm	Lens:	EF50mm f/1.4 USM
Direction of view:	295°	Paper size:	841 x 297 mm (half A1)	Camera height:	1.5 m AGL
Nearest turbine:	34.385 km	Correct printed image size:	820 x 260 mm	Date and time:	20/04/2022, 11:42

Figure: 18:34f
Viewpoint 11: Southport Pier



Photomontage

View flat at a comfortable arm's length

OS reference: 333109 E 417985 N
Eye level: 8.24 m AOD
Direction of view: 295°
Nearest turbine: 34.385 km

Horizontal field of view: 53.5° (planar projection)
Principal distance: 812.5 mm
Paper size: 841 x 297 mm (half A1)
Correct printed image size: 820 x 260 mm

Camera: Canon EOS 6D
Lens: EF50mm f/1.4 USM
Camera height: 1.5 m AGL
Date and time: 20/04/2022, 11:42

Figure: 18:34g
Viewpoint 11: Southport Pier